

NEED FURNITURE FAST?

Desking Supplied and installed by:

HSI Furniture

Units 1 & 2, Mays Farm, Hyde End Lane, Reading, RG7 1EP

t] 0118 9883009

e] sales@hsifurniture.co.uk

w] www.hsifurniture.co.uk

2018



... GET IT QUICK!

Quality Office Furniture Delivered Within Days

So when you're in a hurry, simply select your desking, seating, storage and accessories and we'll do the rest. Ordering from a single manufacturing source, based in the UK, you can be assured of buying the best of British. With accreditations for ISO9001 for quality and ISO14001 and FISP for environmental and forestry protection and 5-10 year product warranties* you can put your mind at rest.

No matter what style, there's a product solution for all projects.

CONTENTS

Pricepoint	4-7
Qore	8-15
Relay Bench	16-21
Tables	22-27
Seating	28-29
Accessories	30
Conditions of Sale	32-33



*10 year warranty applies to desking excluding moving parts. All prices shown are standard retail prices and are in sterling (£) excluding VAT. Prices correct at time of printing.



Pricepoint Crescent Desk with
White MFC Finish and Silver
Cantilever Legs.

PRICEPOINT

Pricepoint is a range of extremely competitively priced desking and storage solutions.

Available in two substructure variations, cantilever and panel end, Pricepoint offers good value for money without compromising quality. With a multitude of desktop shapes and sizes to choose from, Pricepoint is a flexible and functional solution for any organisation and budget.

MFC FINISHES



Oak

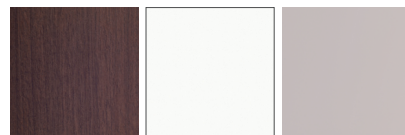
J

Beech

H

Mandal
Birch

17

Tabacco
Pacific
Walnut

41

White

W

Grey

60

LEG FINISH



Silver

S

HOW TO SPECIFY YOUR ORDER

EXAMPLE FOR: 1800mm Wide Straight Desk with White MFC Finish

Selected Product: R#D18S

Selected MFC Finish: White W (replaces #)

Completed Product code = RWD18S

SCREEN FABRIC BANDS

BAND 1

Macflex - Mach 1

Macflex - Universe

BAND 2

Mobus - Turin

Mobus - Erin

BAND 3

Camira - Blazer

Camira - Nexus

PRICEPOINT CANTILEVER



STRAIGHT DESKS

800d x 720h

R#D08S	800w	£196
R#D10S	1000w	£215
R#D12S	1200w	£230
R#D14S	1400w	£244
R#D16S	1600w	£254
R#D18S	1800w	£274



SINGLE WAVE

1000-800d x 720h

R#SW12LS	LH	1200w	£252
R#SW12RS	RH	1200w	£252
R#SW14LS	LH	1400w	£267
R#SW14RS	RH	1400w	£267
R#SW16LS	LH	1600w	£276
R#SW16RS	RH	1600w	£276

RH Right Hand shown



CRESCENT

1200d x 800d x 600d x 720h

R#C16LS	LH	1600w	£364
R#C16RS	RH	1600w	£364
R#C18LS	LH	1800w	£383
R#C18RS	RH	1800w	£383

RH Right Hand shown



SIDE DESK

600d x 720h

R#SD08S	800w	£180
R#SD10S	1000w	£194
R#SD12S	1200w	£211



Grain front to back

PRICEPOINT PANEL END



STRAIGHT DESKS

800d x 720h

R#D08PS	800w	£176
R#D10PS	1000w	£197
R#D12PS	1200w	£211
R#D14PS	1400w	£225
R#D16PS	1600w	£239
R#D18PS	1800w	£255



SINGLE WAVE

1000-800d x 720h

R#SW12LPS	LH	1200w	£232
R#SW12RP-S	RH	1200w	£232
R#SW14LPS	LH	1400w	£248
R#SW14RPS	RH	1400w	£248
R#SW16LPS	LH	1600w	£264
R#SW16RPS	RH	1600w	£264

RH Right Hand shown



CRESCENT

1200d x 800d x 600d x 720h

R#C16LPS	LH	1600w	£333
R#C16RPS	RH	1600w	£333
R#C18LPS	LH	1800w	£353
R#C18RPS	RH	1800w	£353

RH Right Hand shown



CABLE TRAY

(actual length) to fit desk w

E-WM10	Plastic	750	1000w	£43
E-WM16	Plastic	1350	1600w	£48



Please note Pricepoint return tops are 600mm deep.

= Replace with choice of MFC finish: 17 - Mandal Birch, H - Beech, J - Oak, 41 - Tobacco Pacific Walnut, W - White, 60 - Grey

PRICEPOINT ZIP SCREEN



DESK UP - STRAIGHT 1105H - T CAP

35d x 1105h mm		Fabric 1	Fabric 2	Fabric 3	MFC
ZSDS08T	800w	£155	£165	£189	£119
ZSDS10T	1000w	£158	£173	£202	£125
ZSDS12T	1200w	£167	£182	£217	£134
ZSDS1220T	1220w	£167	£182	£218	£134
ZSDS14T	1400w	£173	£189	£231	£142
ZSDS1420T	1420w	£173	£189	£231	£142
ZSDS16T	1600w	£177	£197	£243	£149
ZSDS1620T	1620w	£177	£197	£244	£149
ZSDS18T	1800w	£193	£213	£266	£155
ZSDS1820T	1820w	£193	£213	£266	£155

Note: Zip Screens are not supplied with fixings, please order brackets separately.

FITTING KIT

FKZIPD

Kits are supplied free of charge

Add suffix code for fabric option e.g. ZSDS16FYB009

PRICEPOINT PEDESTALS

BUDGET NARROW PED

338w x 670h

PL3BN-M#	(3 Drw)	600d	£246
----------	---------	------	------



HIGH MOBILE PED

438w x 670h

PL3B-M#	(3 Drw)	600d	£246
---------	---------	------	------

PEDESTAL PEN TRAY

For 420w pedestals

PEN1	420w	£10
------	------	-----



DESK HIGH STATIC PEDS

438w x 720h

P6R3BX-M#	(3 Drw)	600d	£246
PD3B-M#	(3 Drw)	800d	£270
PEN1		420w	£10



PRICEPOINT STORAGE

FILING CABINET

4 Drawer. 480w x 635d mm

FC4-M#-*	1305h	£554
----------	-------	------



CUPBOARDS

Double Door - 1000w x 500d mm

#CD7	720h	£292
#CD12	1200h	£369
#CD16	1600h	£416
#CD20	2000h	£475



INTERNALS

for Double Door Cupboards

OS10-M#	Wooden Shelf	£33
PSS10	Plain Metal Shelf	£66
LF10	Lateral Filing Frame	£92
FRM10	Pull Out Filing Frame	£186
FRMAT	Pull Out Filing FrameAnti-Tilt Kit*	£15

BOOKCASES

800w x 320d mm

#BC81	incl 1 shelf	845h	£176
#BC82	incl 2 shelves	1245h	£225
#BC83	incl 3 shelves	1645h	£269



SIDE TAMBOUR

1000w x 500d mm

ST1810-M#	1865h	£896
-----------	-------	------



INTERNALS

for Side Tambour

OS08-M#	Wooden Shelf	£28
PSS08	Plain Metal Shelf	£55
LF08	Lateral Filing Frame	£79
FRM08	Pull Out Filing Frame	£186
FRMAT	Pull Out Filing FrameAnti-Tilt Kit*	£15

FRMAT Anti-tilt kits must be fitted where 2 or 3 filing frames are used in a storage unit. Fit and fully load lower frames before loading ones above. (Maximum of 3 filing frames) 1 Kit for 2 frames - 2 kits for 3 frames. Our Storage does not include any internals, please order internals separately.



Qore U Leg Straight Desk with
White MFC Finish and White U Legs.

QORE

However you work, Qore can be adapted to suit your exact work-style.

It provides cost effective solutions for every office type from open plan benching, call centres to cellular and trading office configuration, and with three distinct leg styles there is a look and feel to suit all environments. Designed and tested to the most rigorous standards, Qore allows you to build your office with future proof IT and desk accessories at the heart of the workstation.

MFC FINISHES



Oak

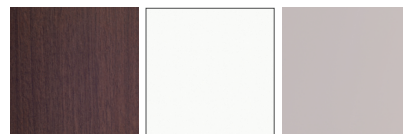
Beech

Mandal
Birch

J

H

17

Tabacco
Pacific
Walnut

White

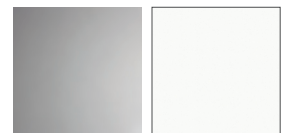
Grey

41

W

60

LEG FINISH



Silver

White
U Leg
Only

S

W

HOW TO SPECIFY YOUR ORDER

EXAMPLE FOR: 1800mm Wide U Leg Straight Desk in White MFC Finish with Silver Legs

Selected Product: U-D18-M#-*

Selected MFC Finish: White W (replaces #)

Selected Leg Finish: Silver S (replaces *)

Completed Product code = U-D18-MW-S

STORAGE

TAMBOURS

Silver

HANDLES

Silver Straight
Handle - ASilver Curved
Handle- S**White Curved
Handle- W**

SCREEN FABRIC BANDS

BAND 1

Macflex - Mach 1

Macflex - Universe

BAND 2

Mobus - Turin

Mobus - Erin

BAND 3

Camira - Blazer

Camira - Nexus

** Handle design may be subject to slight design variation.

QORE PANEL END



STRAIGHT DESKS

800d x 720h

P-D08-M#-S	800w	£246
P-D10-M#-S	1000w	£259
P-D12-M#-S	1200w	£267
P-D14-M#-S	1400w	£277
P-D16-M#-S	1600w	£288
P-D18-M#-S	1800w	£299



BOW FRONT

900-800d x 720h

P-DB18-M#-S	1800w	£356
-------------	-------	------



SINGLE WAVE

1000-800d x 720h

P-WD12L-M#-S	LH	1200w	£334
P-WD12R-M#-S	RH	1200w	£334
P-WD14L-M#-S	LH	1400w	£344
P-WD14R-M#-S	RH	1400w	£344
P-WD16L-M#-S	LH	1600w	£355
P-WD16R-M#-S	RH	1600w	£355

RH Right Hand shown.



120°

1200d x 800d x 720h

P-D3W12-M#-S	1200w	£568
--------------	-------	------



TASK - WORKSTATION

1200d x 800d x 635d x 720h

P-T16L-M#-S	LH	1600w	£406
P-T16R-M#-S	RH	1600w	£406
P-T18L-M#-S	LH	1800w	£422
P-T18R-M#-S	RH	1800w	£422

RH Right Hand shown.



TASK - WORKSTATION

1600d x 800d x 635d x 720h

P-T1616L-M#-S	LH	1600w	£499
P-T1616R-M#-S	RH	1600w	£499

RH Right Hand shown.



TASK - BOW FRONT

1380/1200d x 800d x 635d x 720h

P-T18BL-M#-S	LH	1800w	£467
P-T18BR-M#-S	RH	1800w	£467

RH Right Hand shown.



TASK - D END

1200d x 800d x 635d x 720h

P-T18DL-M#-S	LH	1800w	£475
P-T18DR-M#-S	RH	1800w	£475

RH Right Hand shown.



RETURN

635d x 720h

P-R08-M#-S	800w	£237
P-R10-M#-S	1000w	£246
P-R12-M#-S	1200w	£259



Grain front to back

Please note Qore return tops are 635mm deep

QORE CANTILEVER



STRAIGHT DESKS

800d x 720h

B-D08-M#-S	800w	£271
B-D10-M#-S	1000w	£284
B-D12-M#-S	1200w	£292
B-D14-M#-S	1400w	£302
B-D16-M#-S	1600w	£313
B-D18-M#-S	1800w	£324



BOW FRONT

980-800d x 720h

B-DB18-M#-S	1800w	£381
-------------	-------	------



SINGLE WAVE

1000-800d x 720h

B-WD12L-M#-S	LH	1200w	£365
B-WD12R-M#-S	RH	1200w	£365
B-WD14L-M#-S	LH	1400w	£375
B-WD14R-M#-S	RH	1400w	£375
B-WD16L-M#-S	LH	1600w	£386
B-WD16R-M#-S	RH	1600w	£386

RH Right Hand shown.



120°

1200d x 800d x 720h

B-D3W12-M#-S	1200w	£593
--------------	-------	------



TASK - WORKSTATION

1200d x 800d x 635d x 720h

B-T16L-M#-S	LH	1600w	£431
B-T16R-M#-S	RH	1600w	£431
B-T18L-M#-S	LH	1800w	£447
B-T18R-M#-S	RH	1800w	£447

RH Right Hand shown.



TASK - WORKSTATION

1600d x 800d x 635d x 720h

B-T1616L-M#-S	LH	1600w	£524
B-T1616R-M#-S	RH	1600w	£524

RH Right Hand shown.



TASK - BOW FRONT

1380/1200d x 800d x 635d x 720h

B-T18BL-M#-S	LH	1800w	£492
B-T18BR-M#-S	RH	1800w	£492

RH Right Hand shown.



TASK - D END

1200d x 800d x 635d x 720h

B-T18DL-M#-S	LH	1800w	£500
B-T18DR-M#-S	RH	1800w	£500

RH Right Hand shown.



RETURN

635d x 720h

B-R08-M#-S	800w	£262
B-R10-M#-S	1000w	£271
B-R12-M#-S	1200w	£284



Grain front to back

QORE U LEG



STRAIGHT DESKS

800d x 720h

U-D08-M#-*	800w	£271
U-D10-M#-*	1000w	£284
U-D12-M#-*	1200w	£292
U-D14-M#-*	1400w	£302
U-D16-M#-*	1600w	£313
U-D18-M#-*	1800w	£324



BOW FRONT

980-800d x 720h

U-DB18-M#-*	1800w	£381
-------------	-------	------



SINGLE WAVE

1000-800d x 720h

U-WD12L-M#-*	LH	1200w	£365
U-WD12R-M#-*	RH	1200w	£365
U-WD14L-M#-*	LH	1400w	£375
U-WD14R-M#-*	RH	1400w	£375
U-WD16L-M#-*	LH	1600w	£386
U-WD16R-M#-*	RH	1600w	£386

RH Right Hand shown.



120°

1200d x 800d x 720h

U-D3W12-M#-*	1200w	£593
--------------	-------	------



TASK - WORKSTATION

1200d x 800d x 635d x 720h

U-T16L-M#-*	LH	1600w	£431
U-T16R-M#-*	RH	1600w	£431
U-T18L-M#-*	LH	1800w	£447
U-T18R-M#-*	RH	1800w	£447

RH Right Hand shown.



TASK - WORKSTATION

1600d x 800d x 635d x 720h

U-T1616L-M#-*	LH	1600w	£524
U-T1616R-M#-*	RH	1600w	£524

RH Right Hand shown.



TASK - BOW FRONT

1380/1200d x 800d x 635d x 720h

U-T18BL-M#-*	LH	1800w	£492
U-T18BR-M#-*	RH	1800w	£492

RH Right Hand shown.



TASK - D END

1200d x 800d x 635d x 720h

U-T18DL-M#-*	LH	1800w	£500
U-T18DR-M#-*	RH	1800w	£500

RH Right Hand shown.



RETURN

635d x 720h

U-R08-M#-*	800w	£262
U-R10-M#-*	1000w	£271
U-R12-M#-*	1200w	£284



Grain front to back

QORE DESK ACCESSORIES

DESKING ADD-ONS

MEETING END POLE LEG

Desk Return

Panel:			
P-MEDP-M#-S	1000 x 800	£193	
P-MERP-M#-S	800 x 643	£183	
Cantilever:			
B-MEDP-M#-S	1000 x 800	£193	
B-MERP-M#-S	800 x 643	£183	
U-leg:			
U-MEDP-M#-*	1000 x 800	£193	
U-MERP-M#-*	800 x 643	£183	



LEGS⁺

Half Leg

HL6-S	Silver	635d	£79
HL8-S	Silver	800d	£79
HL6-W	White	635d	£79
HL8-W	White	800d	£79



FULL DEPTH MODESTY PANELS

QFMOD06-M#	600w	£97
QFMOD08-M#	800w	£104
QFMOD10-M#	1000w	£110
QFMOD12-M#	1200w	£121
QFMOD14-M#	1400w	£127
QFMOD16-M#	1600w	£134
QFMOD18-M#	1800w	£140
QFMOD20-M#	2000w	£148

Code is for modesty panel only.
Standard desk fittings to be used

⁺Please note that Qore accepts leg sharing. Ask your representative for a quote.

ACCESSORIES

CABLE RISERS

P-WR-S	Panel End Riser	£28
B-WR-S	Budget Cantilever Riser	£36
NZR2-S	Flexible Riser - For U Leg	£57

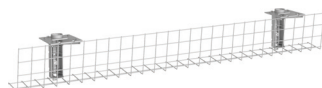


CABLE MANAGEMENT

Wire Basket - Silver

WM08	800w	£41
WM10	1000w	£43
WM12	1200w	£47
WM14	1400w	£62
WM16	1600w	£66
WM18	1800w	£69

Use 1400w cable baskets on 1800w D-End desk



MONITOR ARMS

Maximum weight - 20K - Silver

BQDA	Monitor Arm & Pole	£183
------	--------------------	------

Fits through cable port but requires SB1 bracket unless ordered with Wire Basket

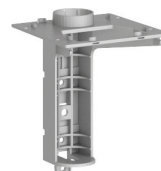


FIXING BRACKET

For Desk Post - Silver

SB1	Desk Post Fixing Bracket	£11
-----	--------------------------	-----

1 required with BQDA unless ordered with Wire Basket



ZIP SCREEN



DESK UP - STRAIGHT 1105H - T CAP

35d x 1105h mm		Fabric 1	Fabric 2	Fabric 3	MFC
ZSDS08T	800w	£155	£165	£189	£119
ZSDS10T	1000w	£158	£173	£202	£125
ZSDS12T	1200w	£167	£182	£217	£134
ZSDS1220T	1220w	£167	£182	£218	£134
ZSDS14T	1400w	£173	£189	£231	£142
ZSDS1420T	1420w	£173	£189	£231	£142
ZSDS16T	1600w	£177	£197	£243	£149
ZSDS1620T	1620w	£177	£197	£244	£149
ZSDS18T	1800w	£193	£213	£266	£155
ZSCS1820T	1820w	£193	£213	£266	£155

Note: Zip Screens are not supplied with fixings, please order brackets separately.

FITTING KIT

FKZIPD Kits are supplied free of charge

Add suffix code for fabric option e.g. ZSDS16TYB009

= Replace with choice of MFC finish: 17 - Mandal Birch, H - Beech, J - Oak, 41 - Tobacco Pacific Walnut, W - White, 60 - Grey

* Select trim option S Silver W White

PEDESTALS

PEDESTAL PEN TRAY

PEN1	420w	£10
------	------	-----

DESK HIGH DESK
DEPTH PEDESTAL

800d x 720h		
PD3W-M#-*	420w	£340
A4 filing left to right or foolscap filing front to back		



DESK HIGH RETURN
DEPTH PEDESTAL

635d x 720h		
PR3WX-M#-*	420 w	£317



UNDER DESK
- HIGH PEDESTAL

600d x 670h			
PL3W-M#-*	A4	420w	£303
A4 filing left to right or foolscap filing front to back			
PL3WN-M#-*	Foolscap	320w	£303
Foolscap filing front to back			



STORAGE

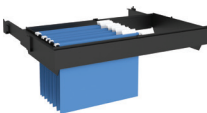
DESK HIGH CUPBOARD

Double Door - 635d x 720h			
CRD08-M#-*		800w	£372
RS08-M#	Shelf	800w	£36
Comes with one shelf. Grain direction front to back.			



PULL OUT FILING FRAME

To be used with Double door storage		
FRM08D	800w	£270



FILING CABINETS

475w x 635d			
FC2-M#-*	2drwr	720h	£379
FC3-M#-*	3drwr	1015h	£471
FC4-M#-*	4drwr	1305h	£554
Foolscap filing left to right only			



= Replace with choice of MFC finish: 17 - Mandal Birch, H - Beech, J - Oak, 41 - Tabacco Pacific Walnut, W - White, 60 - Grey
* = Replace in storage with handle choice - A, W or S

BULK STORAGE

BOOKCASES

1000w x 350d

B00710-M#	720h	£257
B01110-M#	1105h	£311
B01610-M#	1630h	£362
B01810-M#	1865h	£399

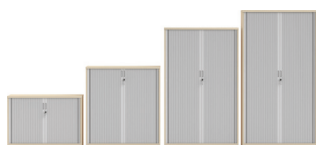


SIDE TAMBOUR

1000w x 500d

ST0710-M#-S	720h	£552
ST1110-M#-S	1105h	£651
ST1610-M#-S	1630h	£839
ST1810-M#-S	1865h	£896

800 wide storage fitments to be used in 1000 wide Side Tambour Units



DOUBLE DOOR CUPBOARDS

1000w x 500d

CD0710-M#-*	720h	£353
CD1110-M#-*	1105h	£399
CD1610-M#-*	1630h	£499
CD1810-M#-*	1865h	£593



DOUBLE DOOR CUPBOARDS

800x x 500d

CD0708-M#-*	720h	£333
CD1108-M#-*	1105h	£368
CD1608-M#-*	1630h	£463
CD1808-M#-*	2235h	£549



ACCESSORIES

SHELF

500d

OS08-M#	800 x 500 x 25	£28
OS10-M#	1000 x 500 x 25	£33



PULL-OUT SHELF

500d

PR08-M#	800 x 500 x 25	£113
PR10-M#	1000 x 500 x 25	£122



LATERAL FILING FRAME

LF08	800	£79
LF10	1000	£92



HANGING RAIL

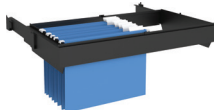
HR08	800w	£38
HR10	1000w	£42



PULL OUT FILING FRAME

1 Kit for 2 frames - 2 kits for 3 frames

FRM08	800w	£186
FRM10	1000w	£186
FRMAT	Pull Out Filing Frame Anti-Tilt Kit	£15



FRMAT Anti-tilt kits must be fitted where 2 or 3 filing frames are used in a storage unit. Fit and fully load lower frames before loading ones above. (Maximum of 3 filing frames)

PLAIN METAL SHELF

1000w x 500d

PSS08	800	£55
PSS10	1000	£66



NOTES

Desk high pedestals and storage in this storage range are 720 high and return tops 635 deep to be used with Qore product range.

Desk high cupboard and 720 high bookcase above can take 2 rows of A4 files and each unit has one shelf as standard. Our Bulk Storage does not include any internals, please order internals separately

800 wide storage fitments to be used in 1000 wide Side Tambour Units.

All pedestals and filing cabinets include anti tilt mechanism as standard.

Desk high pedestals are fitted with castors.

For handled storage and pedestals, please replace * in code with A, S or W as below.



Silver Straight Handle

A



Silver Curved Handle

S**



White Curved Handle

W**



Relay Double Bench with
White MFC Finish and
Silver Legs.

RELAY BENCH

Relay offers unique features on a versatile and functional bench system.

Simple clean lines disguise a robust sub frame which offers flexible seating arrangements on a simple and cost effective platform.

Relay Plus offers a simple slide and connect top which allows for better cable management.

MFC FINISHES



Oak

Beech

Mandal
Birch

J

H

17

Tabacco
Pacific
Walnut

White

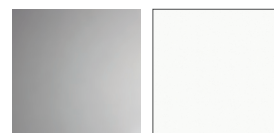
Grey

41

W

60

LEG FINISHES



Silver

White

S

W

HOW TO SPECIFY YOUR ORDER

EXAMPLE FOR: 1600mm Double Bench in White MFC Finish

Selected Product: B#D816C4S

Selected MFC Finish: White W (replaces #)

Completed Product code = BWD816C4S

STORAGE

TAMBOURS

Silver

HANDLES

Silver Straight
Handle - ASilver Curved
Handle- S**White Curved
Handle- W**

SCREEN FABRIC BANDS

BAND 1

Macflex - Mach 1

Macflex - Universe

BAND 2

Mobus - Turin

Mobus - Erin

BAND 3

Camira - Blazer

Camira - Nexus

** Handle design may be subject to slight design variation.

RELAY BENCH SCALLOP



SILVER LEGS

1600D DOUBLE BENCH

1600d x 740h

B-#D812C4S	1200w	£739
B-#D814C4S	1400w	£790
B-#D816C4S	1600w	£823



1600D DOUBLE BENCH ADDITION

1600d x 740h

B-#D812C2S	1200w	£557
B-#D814C2S	1400w	£596
B-#D816C2S	1600w	£627



FINISHING RAIL - STRAIGHT

To be used when no screen ordered

BSR12	1200w	£37
BSR14	1400w	£40
BSR16	1600w	£41



WHITE LEGS

1600D DOUBLE BENCH

1600d x 740h

B-#D812C4W	1200w	£739
B-#D814C4W	1400w	£790
B-#D816C4W	1600w	£823



1600D DOUBLE BENCH ADDITION

1600d x 740h

B-#D812C2W	1200w	£557
B-#D814C2W	1400w	£596
B-#D816C2W	1600w	£627



FINISHING RAIL - STRAIGHT

To be used when no screen ordered

BWR12	1200w	£37
BWR14	1400w	£40
BWR16	1600w	£41



RELAY PLUS SLIDING TOP

Relay bench system with slide and connect tops for easy access cable management.

SILVER LEGS

1600D SLIDING TOP DOUBLE BENCH

1600d x 740h

B#DS812C4S	1200w	£805
B#DS814C4S	1400w	£856
B#DS816C4S	1600w	£888



1600D SLIDING TOP DOUBLE BENCH ADDITION

1600d x 740h

B#DS812C2S	1200w	£623
B#DS814C2S	1400w	£661
B#DS816C2S	1600w	£693



FINISHING RAIL FOR SLIDING TOP - STRAIGHT

To be used when no screen ordered

BSR12	1200w	£37
BSR14	1400w	£40
BSR16	1600w	£41



WHITE LEGS

1600D SLIDING TOP DOUBLE BENCH

1600d x 740h

B#DS812C4W	1200w	£805
B#DS814C4W	1400w	£856
B#DS816C4W	1600w	£888



1600D SLIDING TOP DOUBLE BENCH ADDITION

1600d x 740h

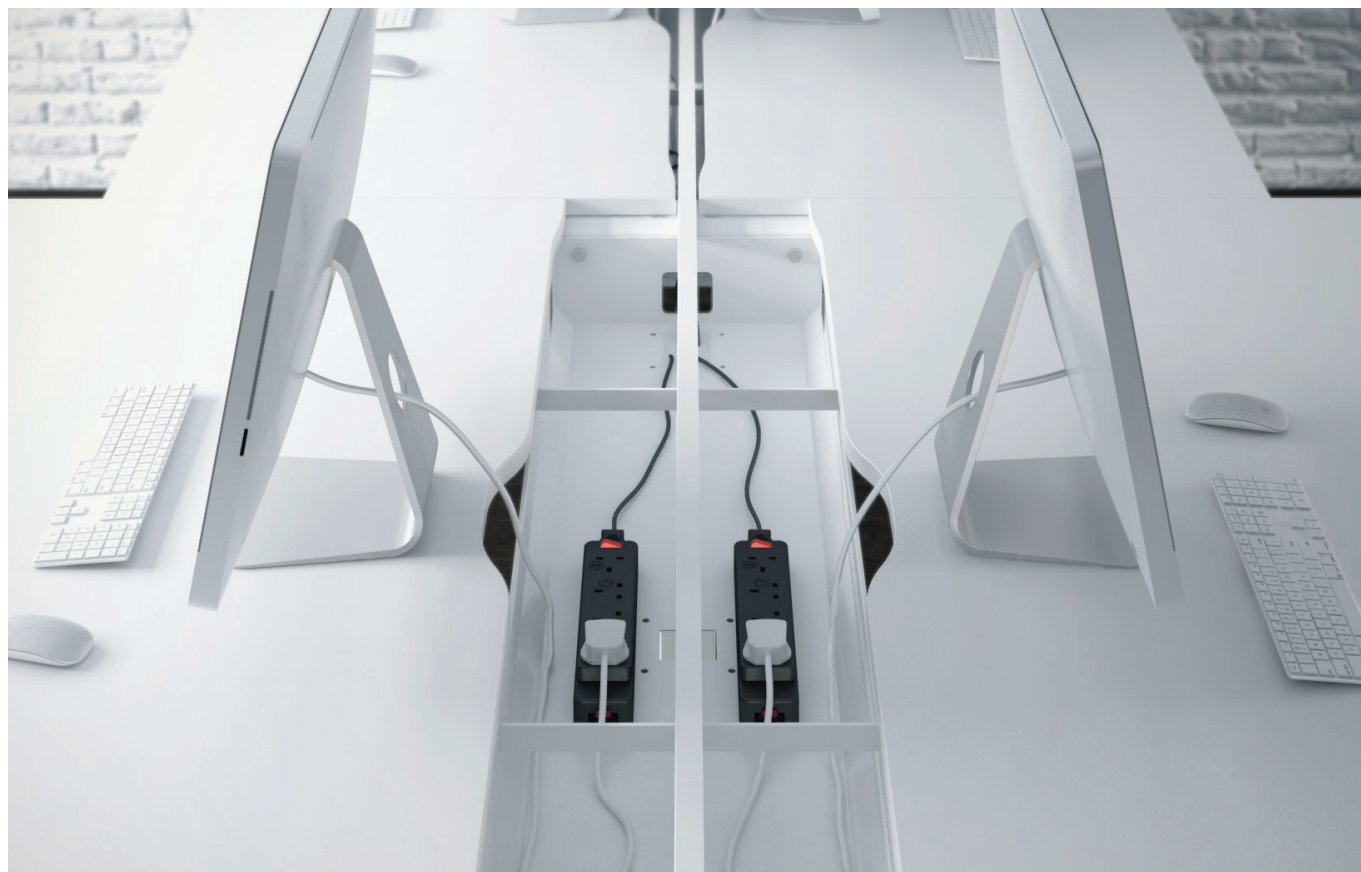
B#DS812C2W	1200w	£623
B#DS814C2W	1400w	£661
B#DS816C2W	1600w	£693



FINISHING RAIL FOR SLIDING TOP - STRAIGHT

To be used when no screen ordered

BWR12	1200w	£37
BWR14	1400w	£40
BWR16	1600w	£41



ZIP SCREEN



DESK UP - STRAIGHT 1105H - T CAP

35d x 1105h mm		Fabric 1	Fabric 2	Fabric 3	MFC
ZSDS12T	1200w	£167	£182	£217	£134
ZSDS14T	1400w	£173	£189	£231	£142
ZSDS16T	1600w	£177	£197	£243	£149

Note: Zip Screens are not supplied with fixings, please order brackets separately.

FITTING KIT

FKRLB Kits are supplied free of charge

Add suffix code for fabric option e.g. ZSDS16FYB009

PEDESTALS

UNDER DESK PEDESTAL

600d x 670h

PL3W-M#-*	A4	420w	£303
-----------	----	------	------

A4 filing left to right or foolscap filing front to back

PL3WN-M#-*	Foolscap	320w	£303
------------	----------	------	------

Foolscap filing front to back



PEDESTAL PEN TRAY

For 420w pedestals

PEN1	420w	£10
------	------	-----

NOTES

For handled storage and pedestals, please replace * in code with A, S or W as below.



Silver Straight Handle

A



Silver Curved Handle

S**



White Curved Handle

W**

**Handle design subject to slight variation.

STORAGE

740H Desk Associated Storage is available on request.

FILING CABINETS

475w x 635d

FC2-M#-*	2drwr	720h	£379
FC3-M#-*	3drwr	1015h	£471
FC4-M#-*	4drwr	1305h	£554

Foolscap filing left to right only



BOOKCASES

1000w x 350d

B00710-M#	720h	£257
B01110-M#	1105h	£311
B01610-M#	1630h	£362
B01810-M#	1865h	£399



SIDE TAMBOUR

1000w x 500d

ST0710-M#-S	720h	£552
ST1110-M#-S	1105h	£651
ST1610-M#-S	1630h	£839
ST1810-M#-S	1865h	£896

800 wide storage fittings to be used in 1000 wide Side Tambour Units



DOUBLE DOOR CUPBOARDS

1000w x 500d

CD0710-M#-*	720h	£353
CD1110-M#-*	1105h	£399
CD1610-M#-*	1630h	£499
CD1810-M#-*	1865h	£593



DOUBLE DOOR CUPBOARDS

800x x 500d

CD0708-M#-*	720h	£333
CD1108-M#-*	1105h	£363
CD1608-M#-*	1630h	£463
CD1808-M#-*	1865h	£549



Our Storage does not include any internals, please order internals separately

STORAGE ACCESSORIES

SHELF

500wd

OS08-M#	800 x 500 x 25	£28
OS10-M#	1000 x 500 x 25	£33



PULL-OUT SHELF

500d

PR08-M#	800 x 500 x 25	£113
PR10-M#	1000 x 500 x 25	£122



LATERAL FILING FRAME

LF08	800	£79
LF10	1000	£92



HANGING RAIL

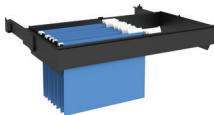
HR08	800w	£38
HR10	1000w	£42



PULL OUT FILING FRAME

1 Kit for 2 frames - 2 kits for 3 frames

FRM08	800w	£186
FRM10	1000w	£186
FRMAT	Pull Out Filing Frame Anti-Tilt Kit	£15



PLAIN METAL SHELF

500d

PSS08	800	£55
PSS10	1000	£66



FRMAT Anti-tilt kits must be fitted where 2 or 3 filing frames are used in a storage unit. Fit and fully load lower frames before loading ones above. (Maximum of 3 filing frames)



Rectangular Arrowhead Base Table with
Mandal Birch MFC Finish.

TABLES

Our tables are designed to suit a variety of applications and budgets.

Conference tables with access to a full range of IT and communication facilities are also available; ask your representative for a quotation.

MFC FINISHES



Oak

J

Beech

H

Mandal
Birch

17

Tabacco
Pacific
Walnut

41

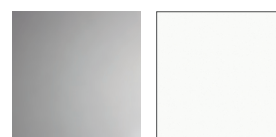
White

W

Grey

60

LEG FINISHES



Silver

S

White

Selected
Tables Only

W

HOW TO SPECIFY YOUR ORDER

EXAMPLE FOR: 1600mm Pole Leg Rectangular Modular Tables in White MFC Finish

Selected Product: MTRP818-M#-S

Selected MFC Finish: White W (replaces #)

Completed Product code = MTRP818-MW-S

TABLES CONFERENCE



RECTANGULAR H-BASE

720h

CTR1224H-S-M#	2400 x 1200	£830
CTR1536H-S-M#	3600 x 1500	£1,362

RECTANGULAR ARROWHEAD BASE

720h

CTD1224A-S-M#	2400 x 1200	£955
CTD1536A-S-M#	3600 x 1500	£1,552

D-END H-BASE

720h

CTD1224H-S-M#	2400 x 1200	£891
CTD1536H-S-M#	3600 x 1500	£1,488



BOAT H-BASE

720h

CTB1224H-S-M#	2400 x 1200	£891
CTB1536H-S-M#	3600 x 1500	£1,488

D-END ARROWHEAD BASE

720h

CTD1224A-S-M#	2400 x 1200	£1,017
CTD1536A-S-M#	3600 x 1500	£1,680

BOAT/BARREL H-BASE

720h

CTB1224A-S-M#	2400 x 1200	£1,017
CTB1536A-S-M#	3600 x 1500	£1,680



RECTANGULAR RIFLE LEG (SILVER)

720h

MTRRS1020-#-S	2000 x 1000	£745
MTRRS1224-#-S	2400 x 1200	£877

RECTANGULAR SQUARE LEG (SILVER)

740h

MTRT1020-#-S	2000 x 1000	£525
MTRT1224-#-S	2400 x 1200	£624

RECTANGULAR SQUARE LEG (WHITE)

740h

MTRT1020-#-W	2000 x 1000	£525
MTRT1224-#-W	2400 x 1200	£624



2.4m wide tables are one piece and 3.6m are two piece

TABLES MEETING

SILVER LEGS

POLE LEG CIRCULAR MEETING TABLES

720h

MTCP8-M#-S	800 (dia)	£235
MTCP10-M#-S	1000 (dia)	£248
MTCP12-M#-S	1200 (dia)	£266



POLE LEG OVAL MEETING TABLE

720h

MTOP1220-M#-S	2000 x 1200	£340
---------------	-------------	------



CIRCULAR COLUMN BASE

720h

MTCS8-M#-S	800 (dia)	£509
MTCS10-M#-S	1000 (dia)	£515
MTCS12-M#-S	1200 (dia)	£547



CIRCULAR STATIC RIFLE LEG

720h

MTCRS8-M#-S	800 (dia)	£406
MTCRS10-M#-S	1000 (dia)	£437



WHITE LEG

CIRCULAR COLUMN BASE

720h

MTCS8-M#-W	800 (dia)	£509
MTCS10-M#-W	1000 (dia)	£515
MTCS12-M#-W	1200 (dia)	£547



TABLES RECEPTION

RECEPTION TABLE - POLE LEGS

400h RECTANGULAR

RTRP510-M#-S	1000 x 500	£216
--------------	------------	------



RECEPTION TABLE - POLE LEGS

400h CIRCULAR

RTCP8-M#-S	800 (dia)	£231
------------	-----------	------



RECEPTION TABLE PANEL H-BASE

400h RECTANGULAR

RTRH510-M#	1000 x 500	£340
------------	------------	------



RECEPTION TABLE PANEL H-BASE

400h CIRCULAR

RTCH8-M#	800 (dia)	£285
----------	-----------	------



2.4m wide tables are one piece and 3.6m are two piece

= Replace with choice of MFC finish: 17 - Mandal Birch, H - Beech, J - Oak, 41 - Tabacco Pacific Walnut, W - White, 60 - Grey

TABLES
MODULAR

SILVER LEGS

POLE LEG RECTANGULAR
MODULAR TABLES

720h		
MTRP88-M#-S	800 x 800	£216
MTRP810-M#-S	1000 x 800	£224
MTRP812-M#-S	1200 x 800	£231
MTRP814-M#-S	1400 x 800	£291
MTRP816-M#-S	1600 x 800	£297
MTRP818-M#-S	1800 x 800	£306



POLE LEG SEMI-CIRCULAR
MODULAR TABLES

720h		
MTSP816-M#-S	1600 x 800	£224



FOLDING MODULAR
TABLE

740h WITH CHROME LEG FRAME		
TTRF816-M#-C	1600 x 800	£402



SILVER SQUARE LEG
RECTANGULAR
MODULAR TABLES

740h		
MTRT88-M#-S	800 x 800	£304
MTRT810-M#-S	1000 x 800	£312
MTRT812-M#-S	1200 x 800	£328
MTRT814-M#-S	1400 x 800	£380
MTRT816-M#-S	1600 x 800	£387
MTRT818-M#-S	1800 x 800	£401



SILVER SQUARE LEG
SEMI-CIRCULAR
MODULAR TABLES

740h		
MTST816-M#-S	1600 x 800	£292



WHITE LEGS

WHITE SQUARE
LEG RECTANGULAR
MODULAR TABLES

740h		
MTRT88-M#-W	800 x 800	£304
MTRT810-M#-W	1000 x 800	£312
MTRT812-M#-W	1200 x 800	£328
MTRT814-M#-W	1400 x 800	£380
MTRT816-M#-W	1600 x 800	£387
MTRT818-M#-W	1800 x 800	£401



WHITE SQUARE LEG
SEMI-CIRCULAR
MODULAR TABLES

740h		
MTST816-M#-W	1600 x 800	£292



STORAGE

-  Silver Straight Handle – A
-  Silver Curved Handle – S**
-  White Curved Handle – W**

CREDENZA

1500w x 500d x 720h		
CD15-M#-*	Includes one 500w shelf	£527



CUPBOARD

1000w x 500d		
CD0710-M#-*	720h	£353



SHELF

500d		
OS10-M#	1000 x 500 x 25	£33



= Replace with choice of MFC finish: 17 - Mandal Birch, H - Beech, J - Oak, 41 - Tobacco Pacific Walnut, W - White, 60 - Grey
* = Replace in storage with handle choice - A, S or W. **Handle design subject to slight variation. Our Storage does not include any internals, please order internals separately.



Other Relay Tables are
available on longer lead times.
Call for more information.

SEATING SOLUTIONS

Our task seating ranges Tabitha and Quasar offer ergonomic design with functionality and versatility. Competitively priced to suit every organisation and budget.

UPHOLSTERY

Band 1	Band 2	Band 3
Macflex - Mach 1	Camira - Advantage	Camira - Sprint
Macflex - Universe	Camira - Phoenix	Camira - X2
	Camira - Manhattan	Camira - Xtreme
	Mobus - Turin	Camira - Mainline Plus
	Mobus - Erin	

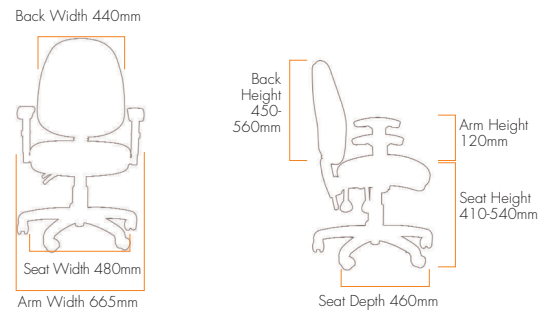
Selected Band 4 & Band 5 fabrics available on request

SEATING TABITHA HIGH BACK OPERATOR CHAIR

8
HOURS

5
YEAR
WARRANTY

- Cushioning comfort
- Ergonomically designed. Durable seat foam with a waterfall seat profile
- Four points of user adjustment



	CODE	BAND 1	BAND 2	BAND 3	BAND 4	BAND 5
NO ARMS	T10P	£196	£206	£234	£255	£302
FIXED ARMS	T16P	£231	£243	£269	£291	£338
ADJUSTABLE ARMS	T1AP	£261	£272	£291	£313	£360

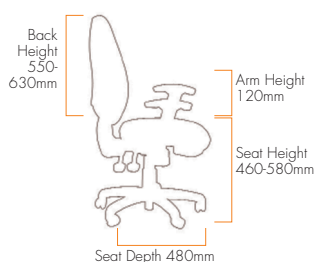
SEATING

QUASAR HIGH BACK OPERATOR CHAIR

8
HOURS

5
YEAR
WARRANTY

- Cushioning comfort
- Ergonomically designed. Sculpted around the human form for maximum comfort and ease of use with a waterfall seat profile
- 5 points of user adjustment to ensure optimum comfort



	CODE	BAND 1	BAND 2	BAND 3	BAND 4	BAND 5
NO ARMS - INDEPENDENT	L301	£290	£305	£343	£370	£435
NO ARMS - WITH SEAT SLIDE	L30J	£323	£338	£376	£404	£468
FIXED ARMS - INDEPENDENT	L321	£311	£326	£364	£391	£456
FIXED ARMS - WITH SEAT SLIDE	L32J	£344	£359	£397	£424	£489
ADJUSTABLE ARMS - INDEPENDENT	L351	£331	£346	£385	£413	£476
ADJUSTABLE ARMS - WITH SEAT SLIDE	L35J	£364	£380	£418	£446	£510
FOLDING ARMS - INDEPENDENT	L371	£347	£361	£400	£427	£494
FOLDING ARMS - WITH SEAT SLIDE	L37J	£380	£393	£433	£460	£524

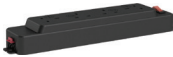
ACCESSORIES

POWER ACCESSORIES

POWER MODULE

N-* Power modules include cable ties

N-TPS3-GST	Triple Power Module	£37
M2P4-GST	4 Socket Power Module	£49



CABLE CONNECTOR

For power module - Wieland Connector

TMF300-GST	300mm	£12
TMF1000-GST	1000mm	£14
TMF2000-GST	2000mm	£16
TMF3000-GST	3000mm	£19



STARTER LEAD

Incl. UK 13amp Plug

TF1000P-GST	1000mm	£17
TF2000P-GST	2000mm	£19
TF3000P-GST	3000mm	£20



CABLE MANAGEMENT

FLEXIBLE RISER

Silver

NZR2-S	£57
--------	-----



HIGH CAPACITY FLEXIBLE RISER

Silver

NZR6	£100
------	------



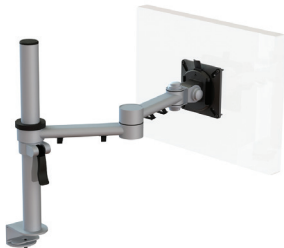
MONITOR ARMS

For use on Relay desking only

DESK CLAMP BUDGET ARM

Silver

OFSP-S	£157
--------	------



DESK CLAMP BUDGET ARM

White

OFSP-W	£157
--------	------



We're proud to be able to craft a wide selection of desking, storage, seating, tables and chairs for your workspace. Our full range, including a wider selection of finishes is showcased within our Price List, call us today.



Desking Supplied and installed by:

HSI Furniture

Units 1 & 2, Mays Farm, Hyde End Lane, Reading, RG7 1EP

t] 0118 9883009

e] sales@hsifurniture.co.uk

w] www.hsifurniture.co.uk

Built to British Standards

Tangent's integrated management system includes certification to internationally recognised standards: ISO9001:2008 (Quality), ISO14001:2004 (Environmental), FSC® Chain of Custody, FISP Furniture Industry Sustainability Program.

BS EN 12521:2015	Strength, durability and stability
BS 4875-7:2006	Performance requirements
BS EN 527-1:2011	Office Furniture – Dimensions and design
BS EN 527-2:2016	Office Furniture – Mechanical safety requirements
BS EN 527-3:2003	Office Furniture – Determination of stability and strength of the structure
BS 6396:2008	Specification for electrical systems in office furniture and office screens

BS 4875-7:2006	Performance requirements
BS EN 14073-2:2004	Specification for performance requirements and tests for office furniture

BS EN 12520:2015	Domestic/contract seating – Determination of strength and durability
BS EN 16139:2013	Non domestic seating – Determination of stability
BS 5459-2:2000	Office pedestal seating – Determination of durability and stability
BS EN 1335-1:2000	Office work chair – Determination of dimensions
BS EN 1335-2:2009	Office work chair – Safety requirements
BS EN 1335-3:2009	Office work chair – Safety test methods

BS EN 1023-1:1997	Office Furniture – Screens – Dimensions
BS EN 1023-2:2000	Office Furniture – Screens – Mechanical safety requirements
BS EN 1023-3:2000	Office Furniture – Screens – Test Methods

BS EN 15372:2016	Furniture – strength, durability and safety
------------------	---



All furniture is guaranteed against defects in design, materials and workmanship for a period of 10 years from the date of delivery for our desking and 5 years for all other items, subject to invalidation through misuse and normal wear and tear.

All prices shown are standard retail prices and are in sterling (£) excluding VAT. Whilst we endeavour to keep our customers aware of any pricing revisions, Tangent Furniture reserves the right to amend pricing without prior notice.

The information in this product guide is believed to be correct at the time of publication.

Our manufacturing policy of continuing product improvement reserves us the right to make technical changes without notice.

Details of Tangent's Product Warranty can be found at tangentfurniture.co.uk

