

FINISHES

AVAILABLE
2018



Choosing your finishes

We recommend you request a sample of the finish you desire to ensure it meets your requirements. Call 0118 9883009 or email sales@hsifurniture.co.uk to order your **2018** sample pack today.

MFC Finishes



OAK MJ



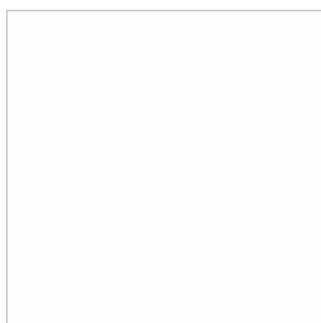
TOBACCO PACIFIC WALNUT
M41



DRIFTWOOD M83



SAND PROVINCIAL ELM ME



WHITE MW



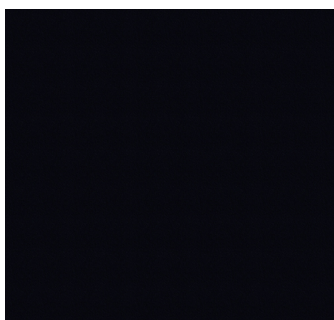
MANDAL BIRCH M17



GREY M60



BEECH** MH



BLACK MB

Executive MFC Finishes

All top finishes will have Ply edge only 11649P69.

All have synchronised grain pattern.



GREY BEIGE
GLADSTONE OAK **MU**



TOBACCO
GLADSTONE OAK **MS**



WHITE FLEETWOOD **MF**

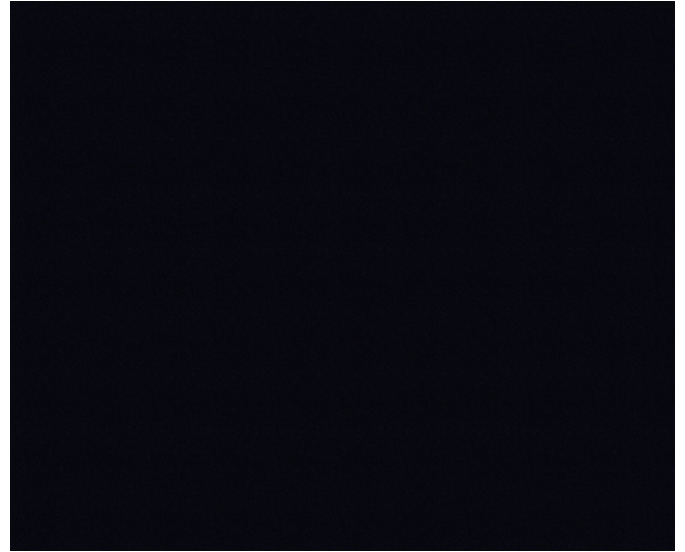


NATURAL SAVONA **MY**

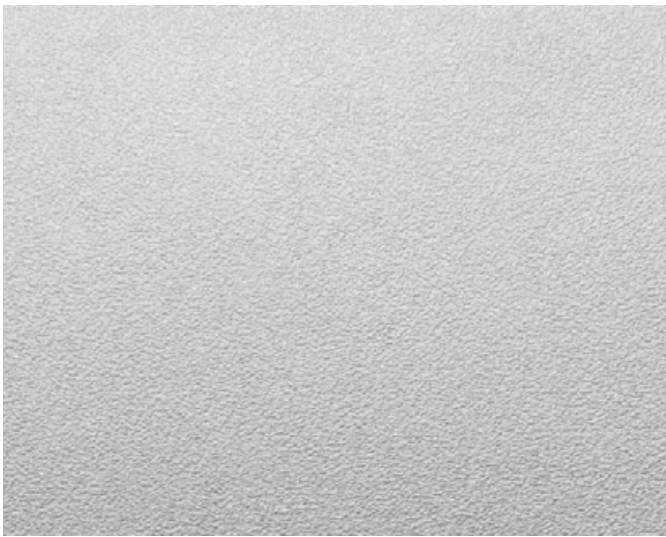
Carcass Options



GRAPHITE U899



BLACK U999



PEBBLE MID GREY MP

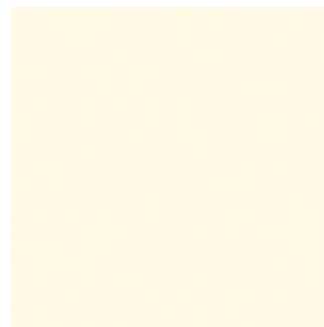
Matt Surfaces

An alternative to nano technology surfaces but with similar properties for medium to large worktops & large storage surfaces. This matt surface sets itself apart from other furniture finishes by its high quality. The special anti-fingerprint property prevents unsightly fingerprints on the surfaces and considerably reduces the amount of cleaning required. The trendy, warm and velvety design invites you to touch and creates a feel good factor.

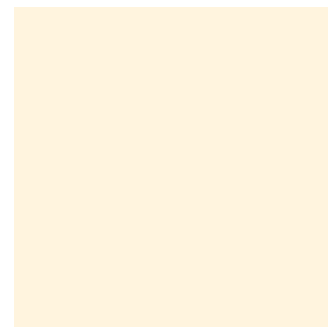
We recommend you request a sample of the finish you desire to ensure it meets your requirements.



ALPINE WHITE W1100



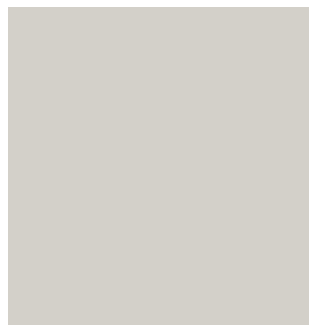
PREMIUM WHITE W1000



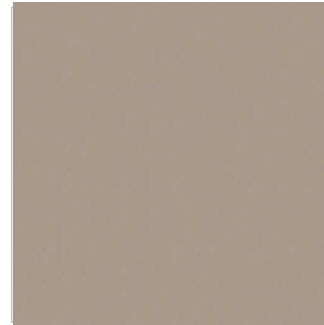
ALABASTER WHITE U104



CREMA BEIGE U222



CASHMERE GREY U702



LIGHT GREY U708



STONE GREY U727



DUST GREY U732



GRAPHITE GREY U961

PROPERTIES

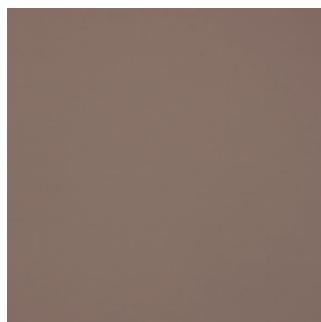
Quality feature	Test standard	Class	Value	Unit
Scratch resistance				
Gloss	DIN 68861-4 / DIN EN 15186	4C	≥1.5	[N]
Matt		4B	≥3	
Resistance to chemicals				
	DIN 68861-1 / DIN EN 12720	1B	-	-
Cross-cut				
	DIN EN ISO 2409	GT 0-1	-	-
Gloss level				
Gloss	EN ISO 2813	60°	92 ±5	GU
Matt		60°	3 ±2	GU
Resistance to dry heat				
	DIN 68861-7 / DIN EN 12722	7C	100	°C
		7B *5)	140	°C
Resistance to wet heat				
	DIN 68861-8 / DIN EN 12721	8B	70	°C
		8A *5)	100	°C
Abrasion resistance				
	DIN 68861-2	2B	> 350 to ≤ 650	WR
Light fastness				
	EN 15187	Blue scale ≥6 Grey scale ≥4		
Wet climate resistance *4)				
(Climate 40 ± 2 °C; relative humidity 85 ± 5%; duration 14 days)	AMK-MB-005, module 2	No gap forming or edge breaking		
Alternating climate resistance *4)				
(10 cycles: 1h Climate -20 ± 2 °C; 3h Climate 20 ± 2 °C / humidity 85 ± 5%; 3h Climate 60 ± 2 °C / humidity 55 ± 5%)	AMK-MB-005, module 3	No surface cracking, no discolouration, no gap forming or edge breaking		

The following cleaning agents must not be used:

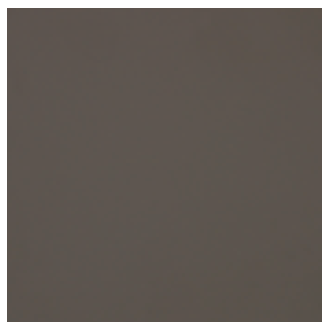
Scouring and abrasive agents (e.g. microfibre cloths, abrasive powders, scouring pads, steel wool).
Polish, washing powder, furniture cleaner, bleach.
Cleaning agents with strong acids and strong acid salts, harsh chemical substances or solvents (e.g. alcohol, ammonia).
Steam cleaning machines.

Nano Technology Surfaces

Nano technology is available for medium to large worktops & large storage surfaces. We recommend you request a sample of the finish you desire to ensure it meets your requirements.



TAUPE 23



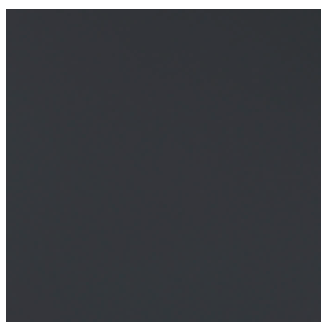
MID GREY 22



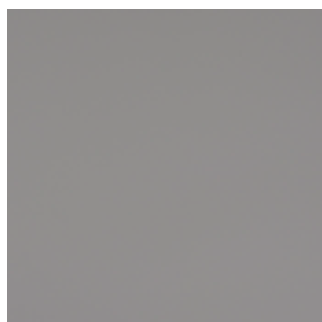
BEIGE 25



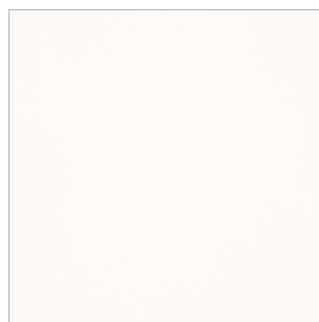
BLACK 20



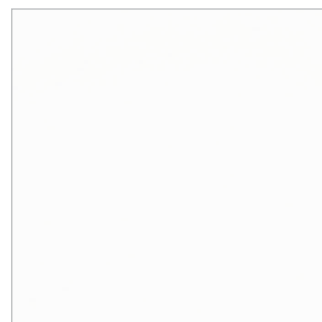
DARK GREY 21



LIGHT GREY 24



OFF WHITE 26



PAPER WHITE 27

PROPERTIES OF NANO TECHNOLOGY



Low light reflectivity,
extremely matt surface



Anti-fingerprint



Antistatic



Hydro-repellent



Thermal healing of
microscratches



Soft touch



Dimensional stability even at
high temperature changes



Resistance to impact



Resistance to scratches and
abrasion



Enhanced anti-bacterial
properties



Lightfastness



Resistance to dry heat



Hygienic



Suitable for contact with food



Excellent intensity and colour
depth



Rub resistance



Easy to clean



Mold-resistant



High resistance to acid
solvents and household
reagents



Self-supporting (only for 10
mm and 12 mm)